



YOUR EVENT AT CERN

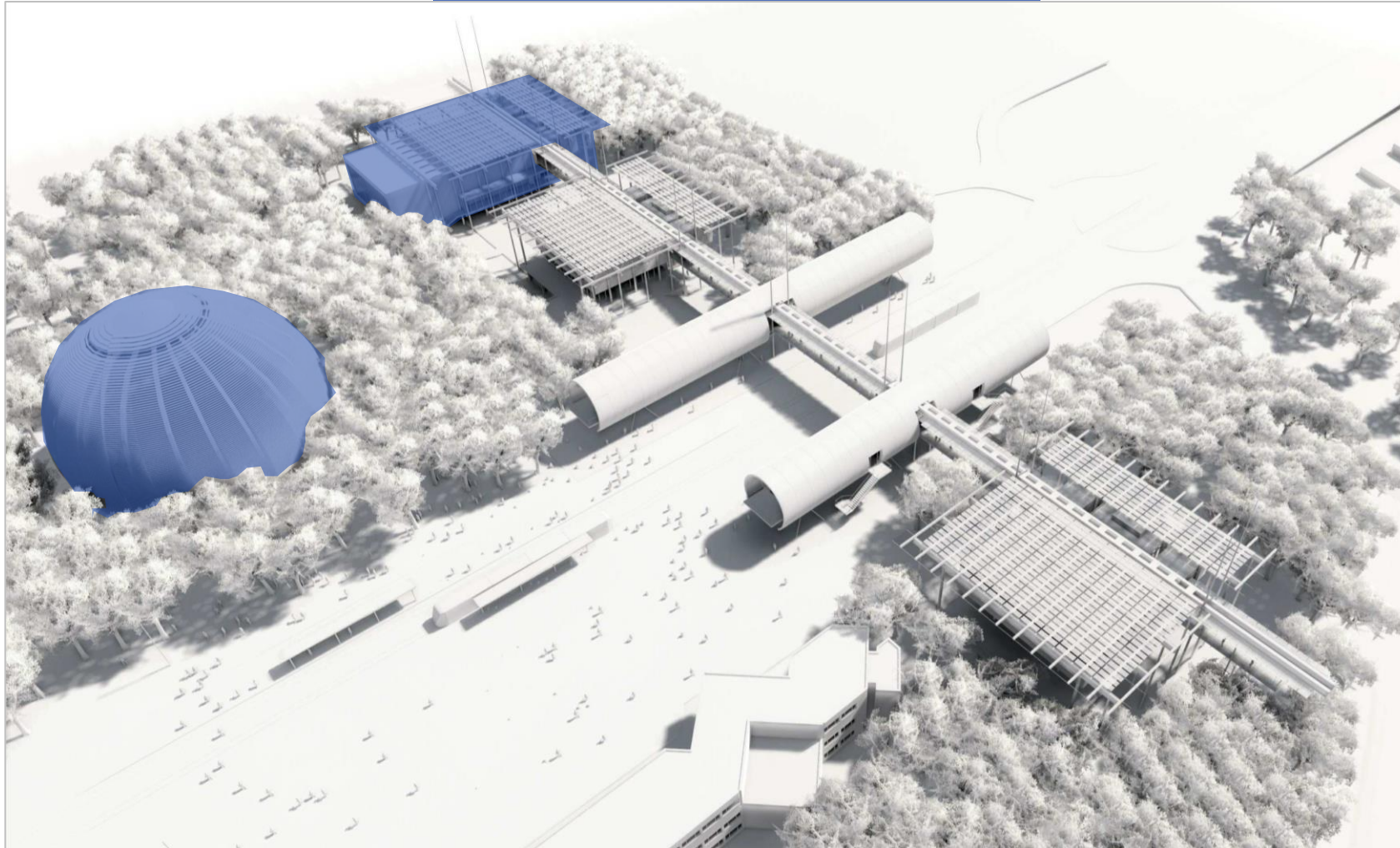


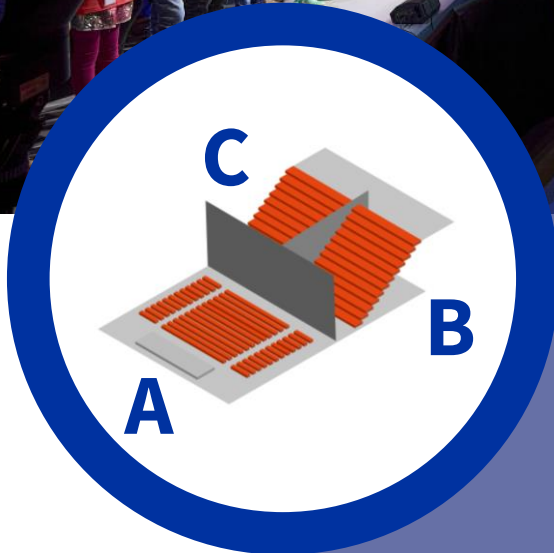
**CERN SCIENCE GATEWAY
PROVIDES THE PERFECT
BACKDROP FOR YOUR
EVENT**

TWO UNIQUE EVENT SPACES

Science Gateway Auditorium and
Globe of Science and Innovation
are available for private events at
CERN

An opportunity to welcome your
guests in unique and fascinating
buildings, emphasise your
commitment to sustainable
development and involved in one
of the most ground-breaking
aspects of research





SCIENCE GATEWAY AUDITORIUM

A 673 m² space that can be divided in up to three spaces (with or without seats) allowing the organisation of meetings, conferences, cocktails and dinners with a maximum capacity of 870 people depending on the layout and chosen activities

(plan 4 hours for a major layout change)



GLOBE OF SCIENCE AND INNOVATION

An auditorium of 300 m² on the first floor and an event space of 340 m² on the ground floor (available mid-2024)

Each space is able to welcome up to 300 people depending on the required layout and activities



GIVE YOUR EVENT A CERN TOUCH



Possibility to request a CERN guided tour (up to 250 participants, depending on availability, usually surface visits only)

Possibility to privatise CERN Science Gateway exhibitions (as from 18.00)

Possibility to show a 13-minutes movie (5 languages, 14 sub-titles) about CERN

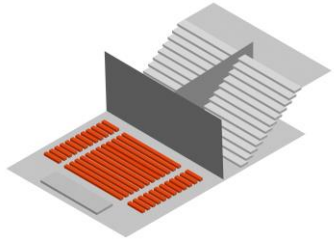


FULL AUDIOVISUAL SUPPORT

Our premises come with full audiovisual support including material and technicians

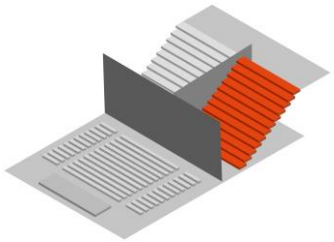


SCIENCE GATEWAY CAMPUS SPACES



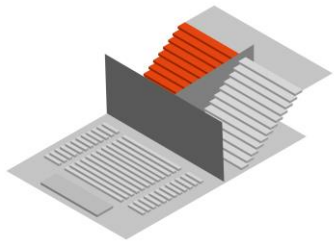
SG A

up to 350 seats
or flat space
385 m²



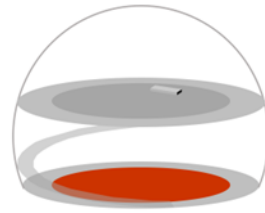
SG B

up to 198 seats
or flat space
140 m²



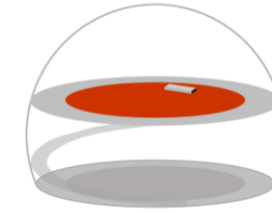
SG C

up to 198 seats
or flat space
140 m²



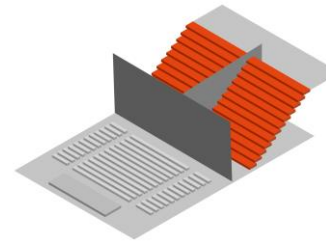
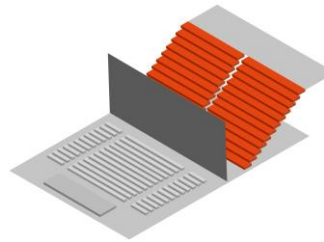
Globe 0

up to 300 standing
(as from mid-2024)
350 m²



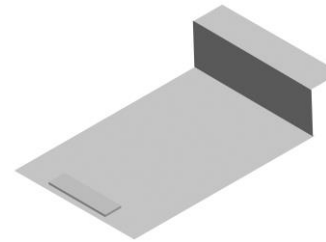
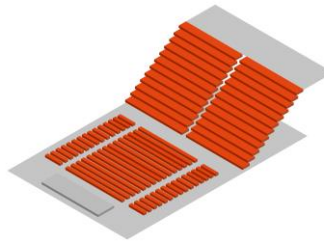
Globe 1

up to 230 seats
or flat space
300 m²



SG BC or B+C

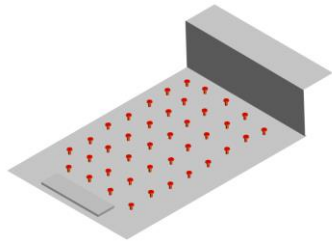
up to 396 seats
in 1 or 2 auditoriums
or flat space(s)
280 m²



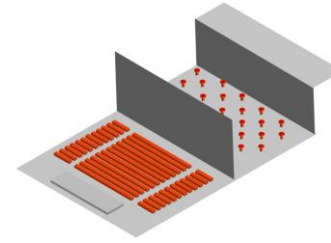
SG ABC

Up to 870 seats
or flat space(s)
717 m²

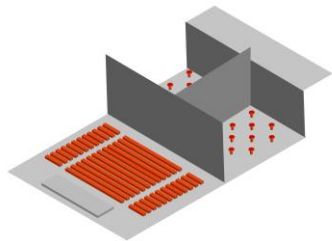
SCIENCE GATEWAY CAMPUS SPACES WITH CATERING



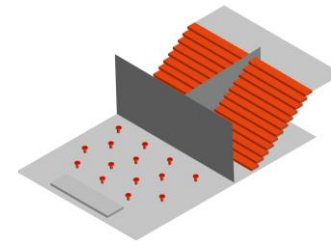
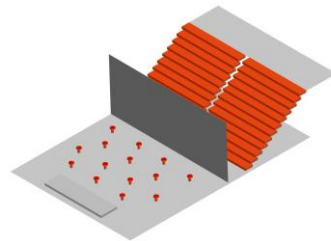
SG **ABC**
flat space
673 m²



SG **A+BC**
up to 350 seats
+ flat space
280 m²

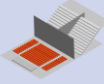
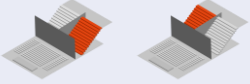
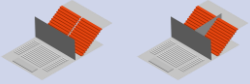
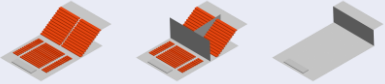





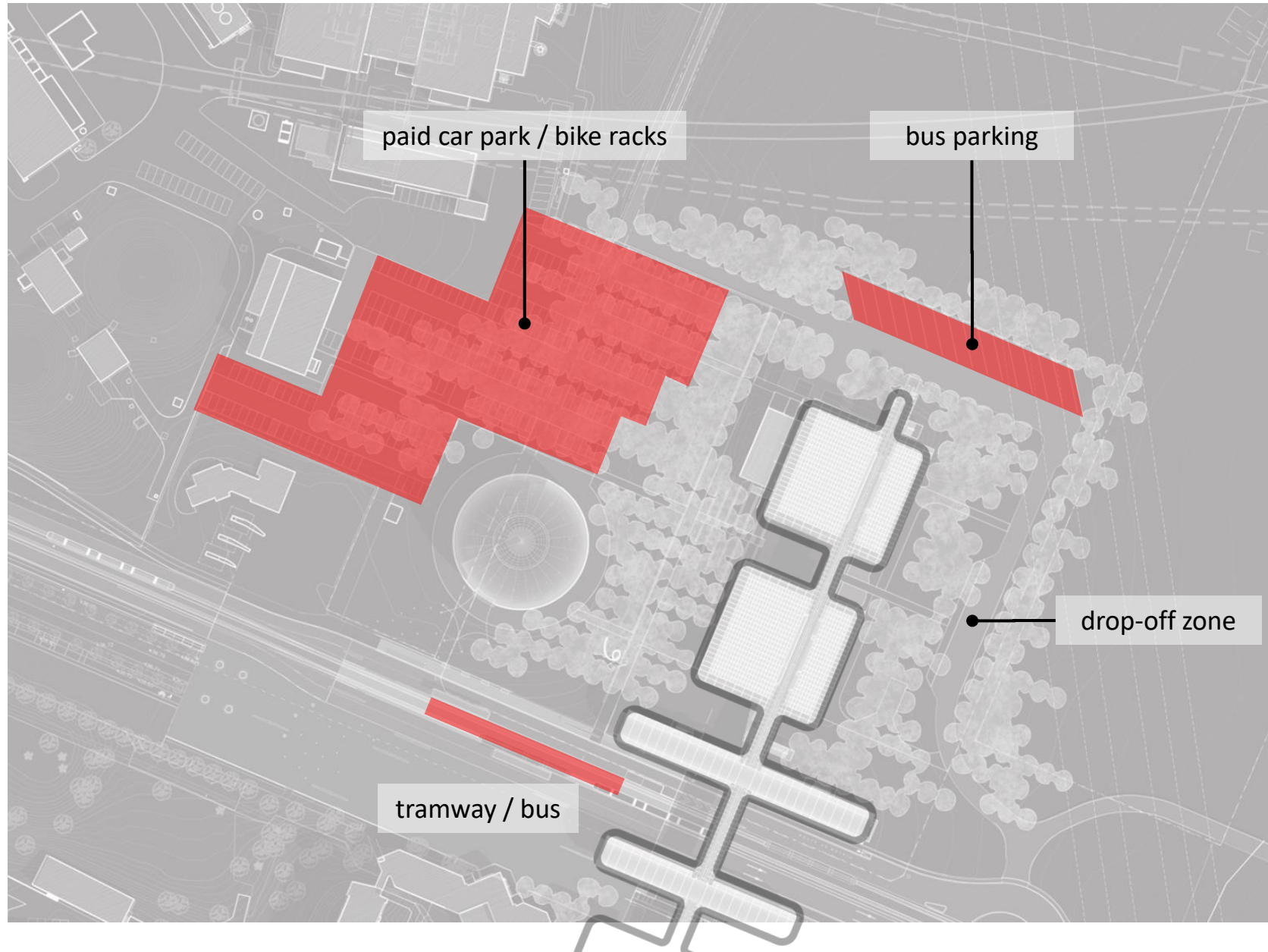
SG **A+B+C**
350 seats
+ flat space
2x 140 m²



SG **A+BC** or **A+B+C**
up to 396 seats
in 1 or 2 auditoriums
+ flat space
385 m²

SCIENCE GATEWAY CAMPUS CAPACITIES

Spaces		Theatre Capacity (up to)	Cocktail capacity (up to)	Dinner Capacity (up to)
	SG A	350	380	200
	SG B or SG C	198	130	80
	SG BC or SG B+C	396	280	130
	SG ABC or SG A+B+C	870	600	350
	Globe 1 or Globe 0	230 (1 only)	300	140
	Globe 1+0	230 (1 only)	300+300	140+140
	SG ABC + Globe 1+0	870+230	600+300+300	350+140+140



MOBILITY

CERN Science Gateway is accessible by car, coach, bike, public transport (tramway and bus)

15 minutes away from Geneva airport and 20 minutes away from Geneva centre (depending on mean of transportation and traffic)

Science Gateway visitors parking is a paid parking (check rates on visit.cern/parking). Few ticket will be distributed for organisers

NB: Traffic can be particularly heavy coming to CERN from the Geneva direction and at the French border, on weekdays between 4 p.m. and 7 p.m. This must be taken into account in planning activities.

EQUIPMENT & SERVICES

Included in the daily fee	Not included in the daily fee
Technical staff (depending on needs)	Catering
CERN Science Gateway AV equipment	Extra AV equipment
Standard conference furniture (chairs and tables)	Extra furniture
Initial layout configuration	Use outside normal hours **
Cleaning	Extra services ***
Digital signage	
Possibility to privatise CERN Science Gateway exhibitions *	
Possibility to request a CERN guided tour (up to 250 participants, depending on availability)	
Possibility to request presentations by and/or panels with CERN experts	

* Outside public opening hours (9.00 – 17.00)

** 8.00 – 24.00 on event days

8.00 – 18.00 on setup and dismantling days

*** Welcome desk personnel, interpreters etc.

EXAMPLES OF LAYOUTS



SG ABC with 870 seats



SG ABC with 870 seats



SG BC with 396 seats



SG ABC empty



SG B with 198 seats



SG ABC with cocktail + exhibition

EXAMPLES OF LAYOUTS



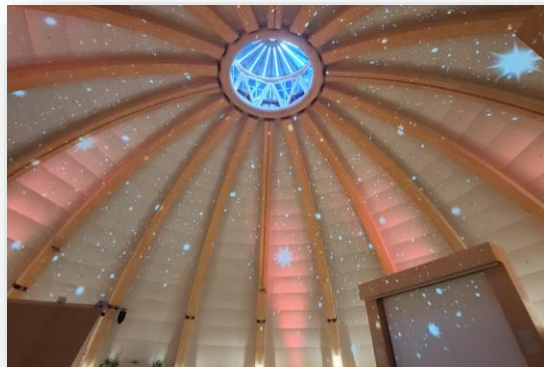
SG A seated dinner



SG BC cocktail



SG A stage with musicians



Globe 1 ceiling projection



Globe 1 cocktail



Globe 1 seated dinner

FINANCIAL CONDITIONS

Our pricing policy is all-inclusive
(see page 11)

Daily fees vary from 15 000 to
60 000 CHF depending on the
requested spaces





CONTACT US

Check [our website](#) for availabilities and fill in the online request to receive a quote

<https://visit.cern/your-event>