



# YOUR CERN EVENT AT SCIENCE GATEWAY

**INTERNAL  
USE ONLY**



**CERN SCIENCE GATEWAY  
PROVIDES THE PERFECT  
BACKDROP FOR YOUR  
EVENT**

# GENERAL PRINCIPLES

Approved by Enlarged Directorate in July 2023

Kindly be aware that CERN Science Gateway operational budget is not fully funded by CERN:

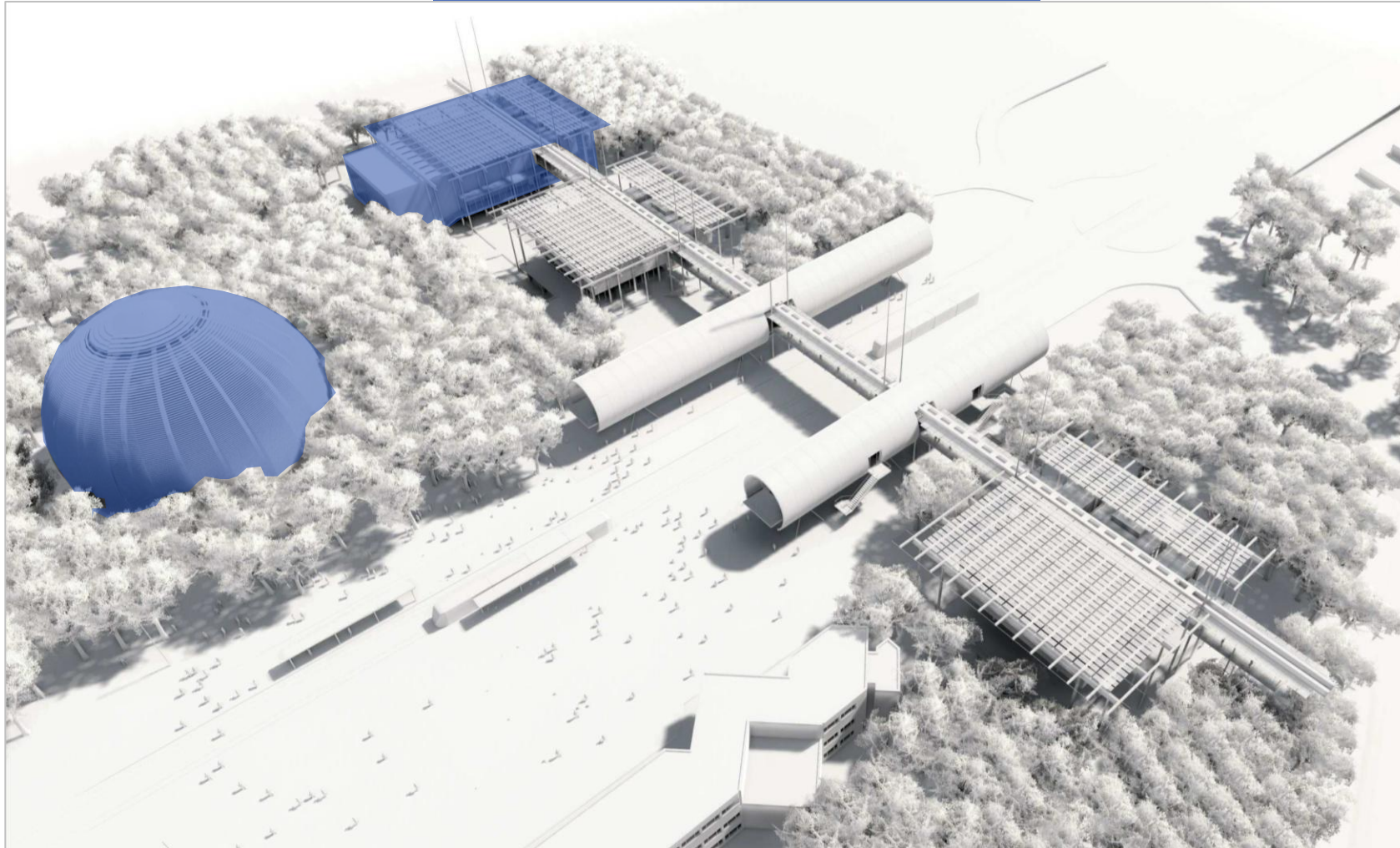
- Any event (co-)organised by CERN in Science Gateway Campus will incur charges which must be billed to a CERN Budget Code provided at the time of booking.
- An email of support by the Head of the requesting Department will be necessary.

Daily fee depends on:

- the topic of the event;
- the audience (CERN card holders only and/or external participants);
- whether external financial support exists.

For any CERN community event below 400 participants, an event space must first be secured inside the CERN fenced domain (Main Auditorium, Council chamber, etc.). The availability of Science Gateway will only be confirmed one month prior the event.

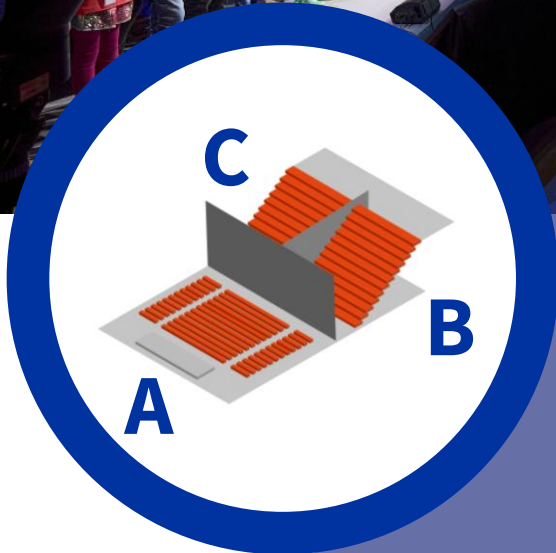




## TWO UNIQUE EVENT SPACES

Science Gateway Auditorium and Globe of Science and Innovation are available for CERN events and events co-organised by CERN and external partners.

An opportunity to host your guests in unique and captivating buildings, showcase your commitment to sustainable development and be part of one of the most ground-breaking areas of research.



# SCIENCE GATEWAY AUDITORIUM

A versatile 673 m<sup>2</sup> space that can be divided into up to three areas (with or without seats) accommodating meetings, conferences, cocktail receptions and dinners for up to 800 guests depending on the layout and selected activities



# GLOBE OF SCIENCE AND INNOVATION

An auditorium of 300 m<sup>2</sup> on the first floor and an event space of 340 m<sup>2</sup> on the ground floor.

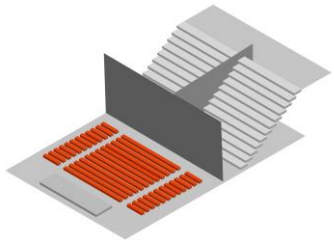
Each space is able to welcome up to 300 people depending on the required layout and activities.

# FULL AUDIOVISUAL SUPPORT

Our premises come with audiovisual support including material and up to 2 AV technicians

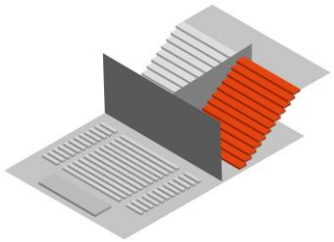


# SCIENCE GATEWAY CAMPUS SPACES



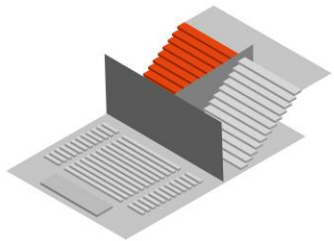
## SG A

up to 350 seats  
or flat space  
**385 m<sup>2</sup>**



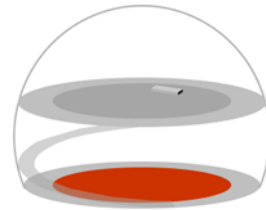
## SG B

up to 198 seats  
or flat space  
**140 m<sup>2</sup>**



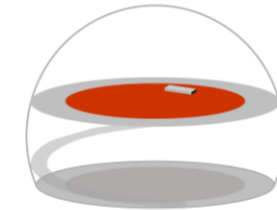
## SG C

up to 198 seats  
or flat space  
**140 m<sup>2</sup>**



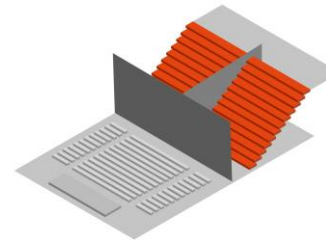
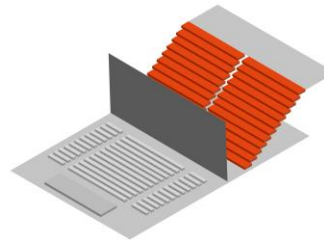
## Globe 0

up to 300 standing  
**350 m<sup>2</sup>**



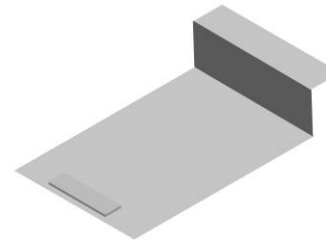
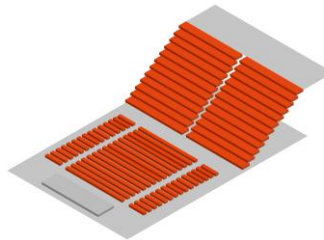
## Globe 1

up to 250 seats  
or flat space  
**300 m<sup>2</sup>**



## SG BC or B+C

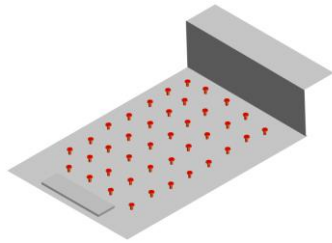
up to 396 seats  
in 1 or 2 auditoriums  
or flat space(s)  
**280 m<sup>2</sup>**



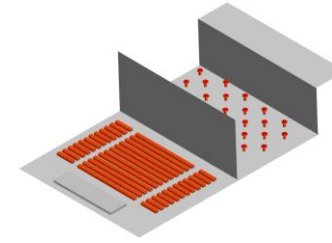
## SG ABC

Up to 800 seats  
or flat space(s)  
**673 m<sup>2</sup>**

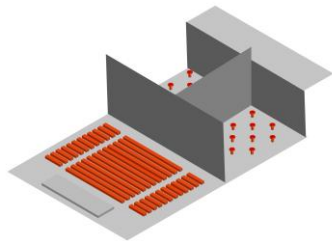
# SCIENCE GATEWAY CAMPUS SPACES WITH CATERING



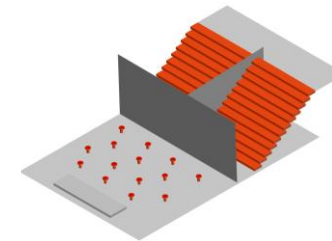
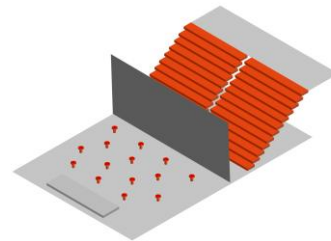
SG **ABC**  
flat space  
**673 m<sup>2</sup>**



SG **A+BC**  
up to 350 seats  
+ flat space  
**280 m<sup>2</sup>**



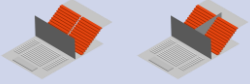


SG **A+B+C**  
350 seats  
+ flat space  
**2x 140 m<sup>2</sup>**

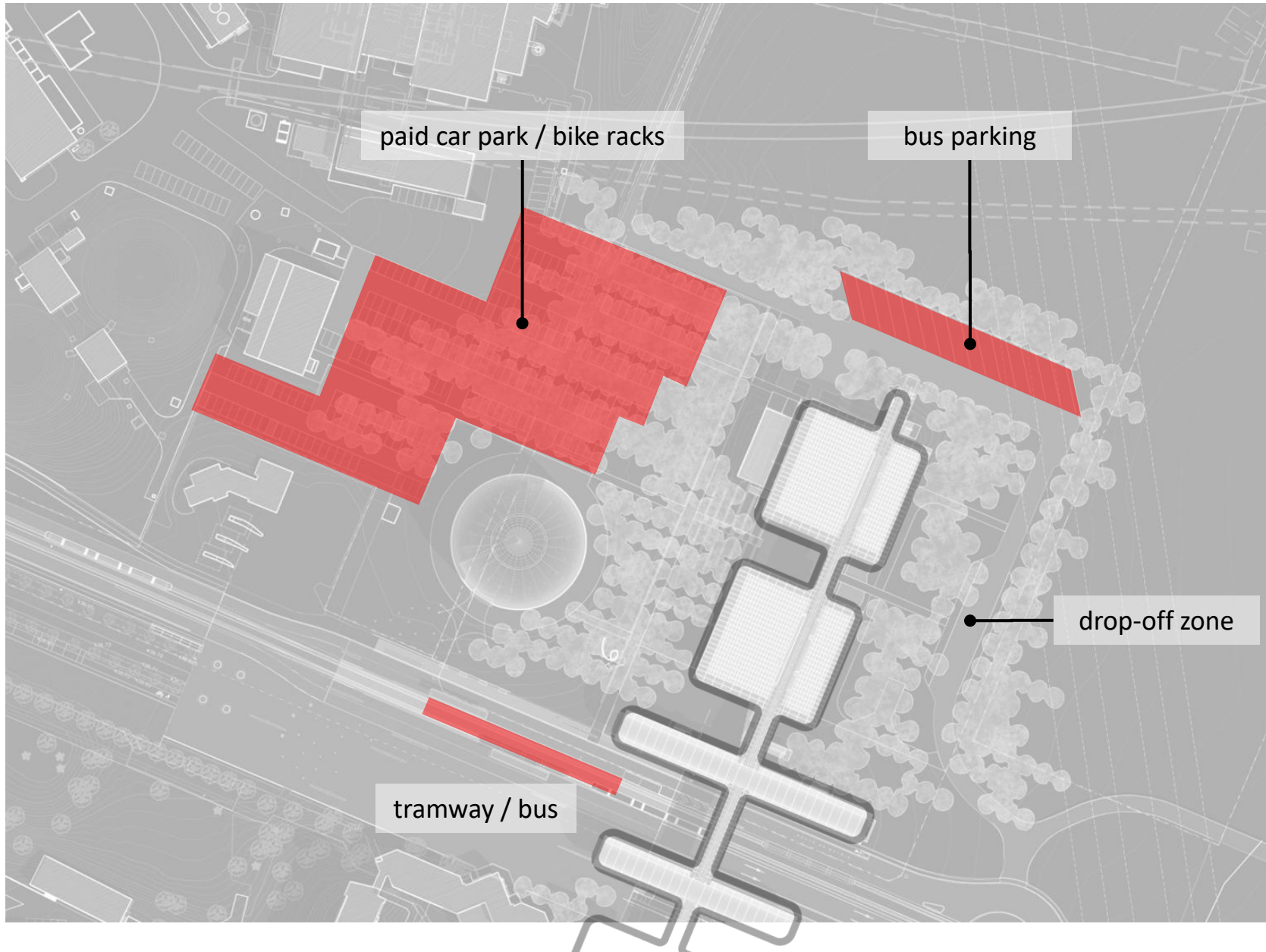


SG **A+BC** or **A+B+C**  
up to 396 seats  
in 1 or 2 auditoriums  
+ flat space  
**385 m<sup>2</sup>**



# SCIENCE GATEWAY CAMPUS CAPACITIES

Spaces		Minimum Attendees	Theatre Capacity (up to)	Cocktail capacity (up to)	Dinner Capacity (up to)
	SG <b>A</b>	200	350	350	150
	SG <b>B</b> or SG <b>C</b>	100	198	130	70
	SG <b>BC</b> or SG <b>B+C</b>	250	396	280	130
	SG <b>ABC</b> or SG <b>A+B+C</b>	400	800	600	350
	Globe <b>1</b> or Globe <b>0</b>	80	250 (level 1)	300	140
	Globe <b>1+0</b>	160	250 (level 1)	300+300	140+140
	SG <b>ABC</b> + Globe <b>1+0</b>	400	800+250(+250)	600+300+300	280+140+140



# MOBILITY

CERN Science Gateway is accessible by car, coach, bike, public transport (tramway and bus)

15 minutes away from Geneva airport and 20 minutes away from Geneva centre (depending on mean of transportation and traffic)

Science Gateway visitors parking is a paid parking (check rates on [visit.cern/parking](https://visit.cern/parking)). Authorised vehicles can park inside CERN fenced domain for free.

NB: Traffic can be particularly heavy coming to CERN from the Geneva direction and at the French border, on weekdays between 4 p.m. and 7 p.m. This must be taken into account in planning activities.

# EQUIPMENT & SERVICES

Included in the daily fee	Not included in the daily fee
Technical staff (up to 2 technicians per venue)	Catering
CERN Science Gateway AV equipment	Extra AV equipment
Standard conference furniture (chairs and tables)	Extra furniture
Initial layout configuration	Use outside normal hours *
Standard cleaning	Extra services **
Digital signage indoor	<p>* 08.00-18.00. Any extra hour outside these hours is billed 20% of the daily fee for CERN community events.</p> <p>** Interpreters, welcome staff, guard, etc.</p>

# EXAMPLES OF LAYOUTS



SG ABC with 800 seats



SG ABC with 800 seats



SG BC with 396 seats



SG ABC empty



SG B with 198 seats



SG ABC with cocktail + exhibition

# EXAMPLES OF LAYOUTS



SG A seated dinner



SG BC cocktail



SG A stage with musicians



Globe 1 ceiling projection



Globe 1 cocktail



Globe 0 empty



# CONTACT US

Check [our website](#) for availabilities and fill in the online request to receive a quote

<https://visit.cern/your-cern-event>